



DOSSIER DE PLANS
VILLA B



Plan de masse

VILLA B

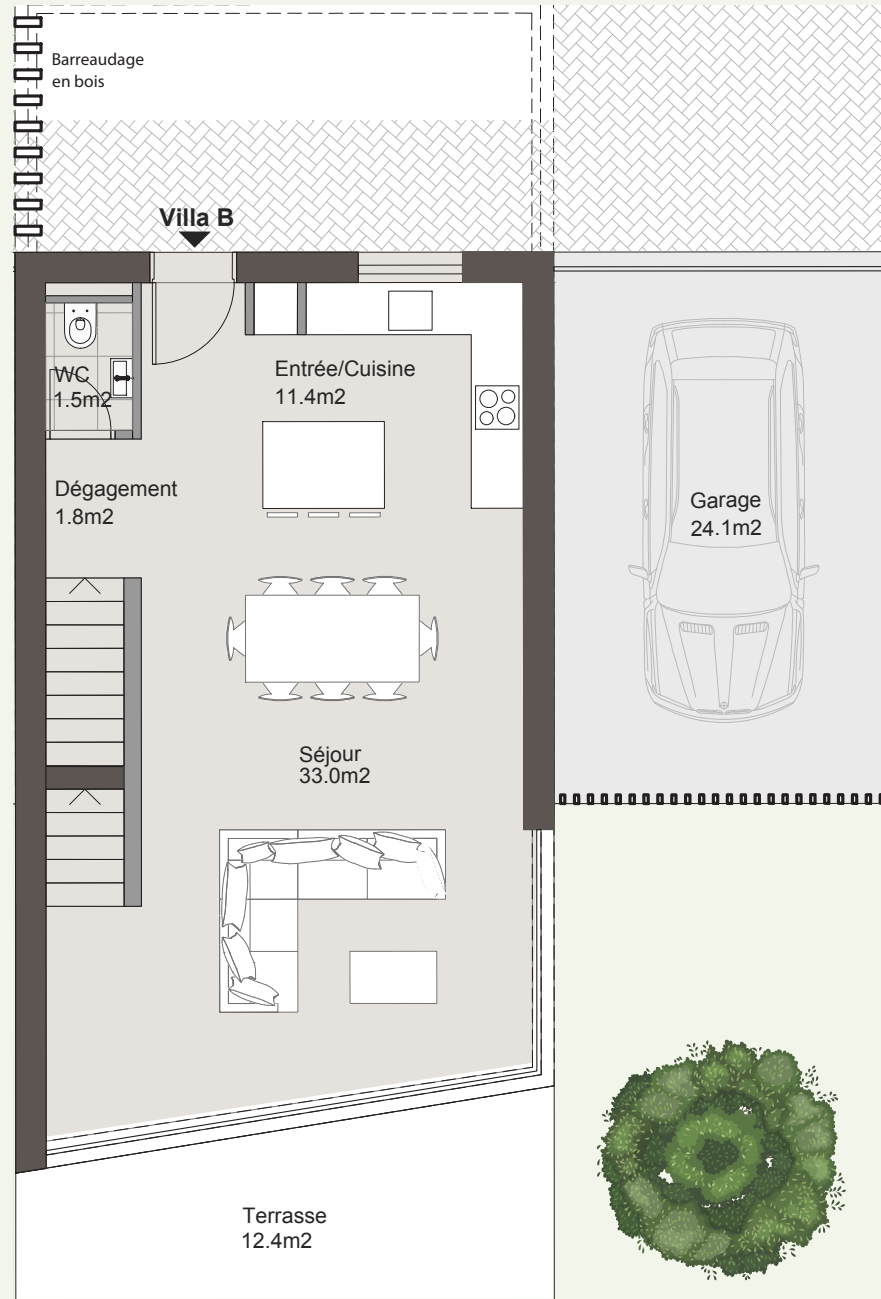
| | |
|-----------------------|----------------------|
| Surface utile | 215.4 m ² |
| Surface habitable SBP | 127.4 m ² |
| Niveaux | 3 |
| Chambres | 3 |
| Sous-sol | 88 m ² |
| Terrasses | 37.8 m ² |
| Jardin privé | 123.7m ² |



Rez-de-chaussée

VILLA B

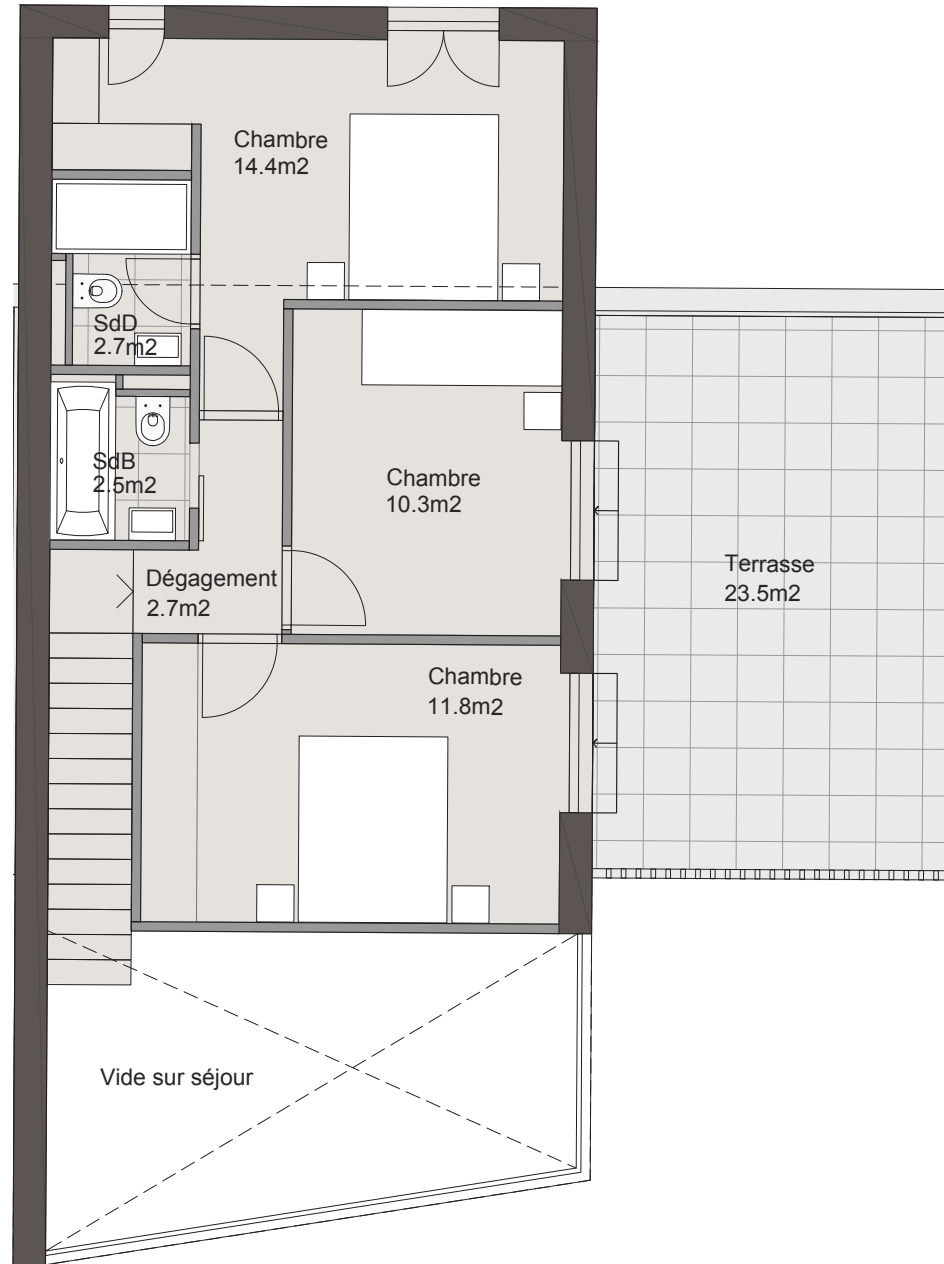
| | |
|----------|---------------------|
| Séjour | 33 m ² |
| Cuisine | 11.4 m ² |
| WC | 1.5m ² |
| Terrasse | 12.4 m ² |
| Garage | 24.1 m ² |



Étage

VILLA B

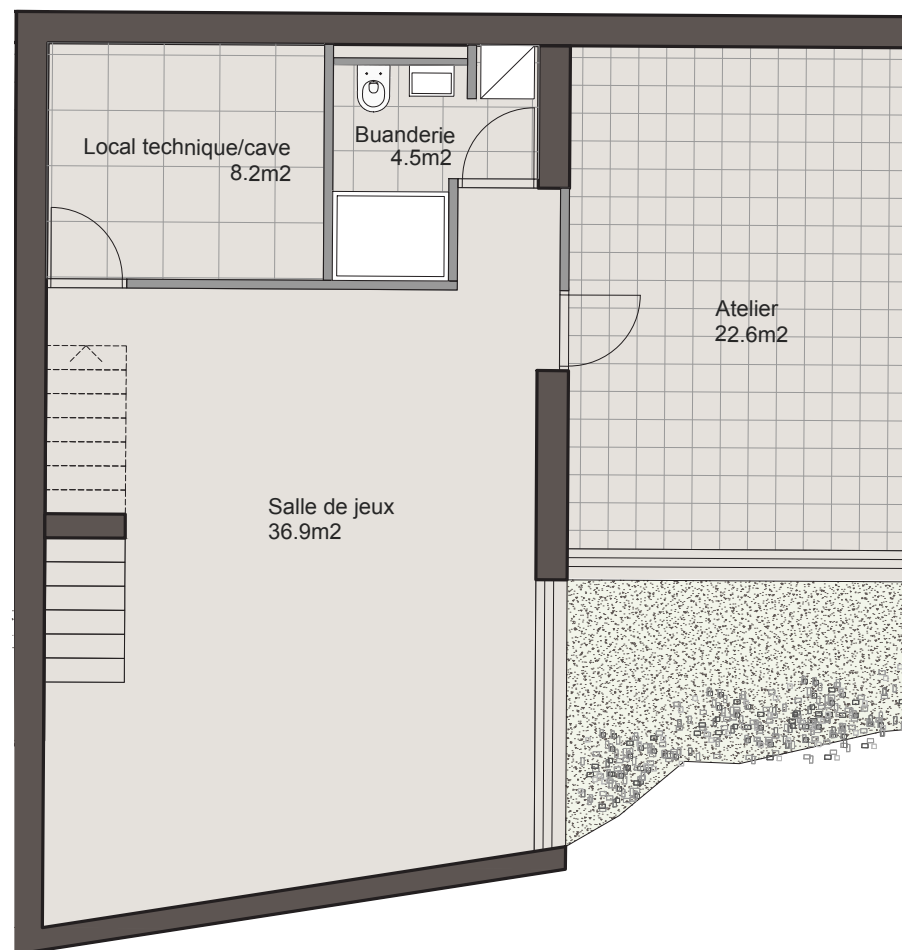
| | |
|-----------------|---------------------|
| Chambre 1 | 14.4 m ² |
| Chambre 2 | 10.3 m ² |
| Chambre 3 | 11.8 m ² |
| Salle de bain | 2.5 m ² |
| Salle de douche | 2.7 m ² |
| Terrasse | 23.5 m ² |



Sous-sol

VILLA B

| | |
|-----------------|---------------------|
| Atelier | 22.6 m ² |
| Salle de jeux | 36.9 m ² |
| Local technique | 8.2 m ² |
| Buanderie | 4.5 m ² |





Informations et images non contractuelles